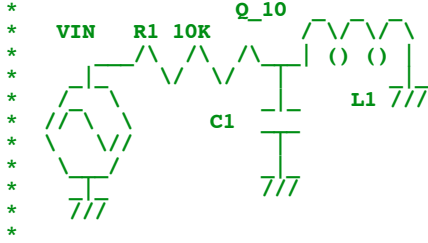




=====**MacSpiceCode**=====

**LCR\_tests**



```
*.OPTIONS GMIN=1p METHOD=TRAP ABSTOL=1u TEMP=27 srcsteps = 1 gminsteps = 1
*.OPTIONS RELTOL=.001 ABSTOL=1n VNTOL=1n ITL4=500 ITL1=400
```

```
=====
```

VIN	VIN	0	DC	0	AC	1
C1	Q_10	0	.1592u			
L1	Q_10	0	.1592			
R1	VIN	Q_10	10k			
C2	Q_1	0	.1592u			
L2	Q_1	0	.1592			
R2	VIN	Q_1	1k			
C3	Q_100	0	.1592u			
L3	Q_100	0	.1592			
R3	VIN	Q_100	100k			
C4	Q_100K	0	.15915494309189u			
L4	Q_100K	0	.15915494309189			
R4	VIN	Q_100K	100000k			

```
.control
set pensize = 2
*AC DECLin NUMDEC FSTART FSTOP
ac dec 1Meg 10 100k
let offfreq = frequency -999.9999
plot db(Q_10) db(Q_1) db(Q_100) db(Q_100K) xlog
plot db(Q_10) db(Q_1) db(Q_100) db(Q_100K) vs offfreq xlog
```

```
.endc
.end
```

```
(581, -3.0) 1 should be 1k
(49, -3.0) 10 should be 100
(4.8, -3.0) 100 should be 10
(5.1m,-3.0) 100k should be 10m
```

```
4.18.11_1.19PM
dsauersanjose@aol.com
Don Sauer
```